

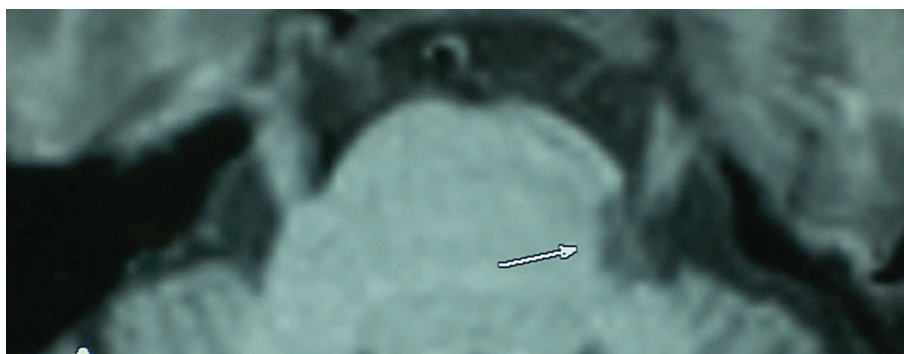
Trigeminal neuralgia and multiple sclerosis

Neuralgia trigeminal e esclerose múltipla

Marcelo Moraes Valença, Luciana Andrade-Valença
Universidade Federal de Pernambuco – UFPE, Recife, PE, Brazil

Valença MM, Andrade-Valença L. Trigeminal neuralgia and multiple sclerosis.
Headache Medicine. 2012;3(1):44

It is estimated that in approximately 15% of the patients the trigeminal neuralgia is secondary to an intracranial abnormality.⁽¹⁾ Thus, all patients must be evaluated with MRI.⁽²⁾ Although a rare association, trigeminal neuralgia may be caused by multiple sclerosis.⁽¹⁻³⁾ The Figure shows a brain MRI of a 49-year-old woman with left V3 trigeminal neuralgia caused by multiple sclerosis. The MRI is demonstrating a demyelinating lesion at the left trigeminal root entry zone (arrow).



REFERENCES

1. Cruccu G, Bonamico LH, Zakrzewska JM. Cranial neuralgias. *Handb Clin Neurol*. 2010;97:663-78.
2. Mills RJ, Young CA, Smith ET. Central trigeminal involvement in multiple sclerosis using high-resolution MRI at 3 T. *Br J Radiol*. 2010;83(990):493-8.
3. De Santi L, Annunziata P. Symptomatic cranial neuralgias in multiple sclerosis: clinical features and treatment. *Clin Neurol Neurosurg*. 2012;114(2):101-7. Epub 2011 Nov 29.

Correspondence

Marcelo M. Valença
Neurology and Neurosurgery Unit, Universidade Federal de
Pernambuco, Cidade Universitária, Recife, PE, Brazil
E-mail: mmvalenca@yahoo.com.br

Received: 1/5/ 2012
Accepted: 1/20/ 2012