



Menstrually-related stabbing headache in a patient without migraine: case report

Marcelo Moraes Valença¹ , Raimundo Pereira Silva-Néto² 

¹Federal University of Pernambuco, Recife, Pernambuco, Brazil

²Federal University of the Parnaíba Delta, Parnaíba, Piauí, Brazil



Marcelo Moraes Valença
mmvalenca@yahoo.com.br

Edited by:

Juliana Ramos de Andrade

Keywords:

Stabbing headache
primary headache
menstruation

Abstract

Introduction

Stabbing headache is considered a primary headache and is a prevalent entity in the general population.

Objective

To present an unusual case of stabbing headache associated with menstruation.
Method: Data collected through complete anamnesis.

Case report

The authors report a case of a woman suffering from a stabbing headache which features that has not been previously described – a menstrual pattern in the presentation of stabbing headache attacks.

Conclusions

We conclude that this menstrual pattern of stabbing headache attacks is unusual in patients with primary stabbing headache and that it does not fulfil diagnostic criteria for migraine or tension-type headache.

Submitted: December 27, 2022
Accepted: December 28, 2022
Published online: December 30, 2022



Introduction

Stabbing headache is considered a primary headache and is a prevalent entity in the general population.¹⁻⁶ Interestingly, it is little known, and few articles have been published regarding its clinical presentation.^{2,3,7,8} Cases of secondary stabbing headache have also been published.⁹⁻¹⁵ The authors report a case of a woman suffering from a stabbing headache which features that has not been previously described – a menstrual pattern in the presentation of stabbing headache attacks.

Case report

Female, 40 years old, with stabbing pain in a fixed point in the right anterior temporal region for two years, lasting 2-3 seconds, intensity 8/10, severe enough to cause the patient to close her eyes. Pain is not precipitated by head movement or the Valsalva maneuver. The patient noticed that the episodes at the beginning were more spaced, but in the

last year, it has been occurring in the premenstrual period, in the seven days before menstruation, and the first two days of menstruation. In this period, it is almost daily, occurring up to three episodes a day, with hours between attacks.

The patient denies a history of arterial hypertension and diabetes mellitus. The serum concentration of free T4 and TSH and the levels of triglycerides, and cholesterol and its fractions were normal.

On MRI, a focus of hypersignal on T2 FLAIR was observed in the right frontal white matter (Figure 1), suggestive of gliosis due to microvascular alteration. In diffusion, there are no areas of restriction to water diffusion. The MRI angiography shows an anatomic variation of the polygon of Willis, with a fetal pattern of both posterior cerebral arteries, which originated from internal carotid carotids (Figure 2).

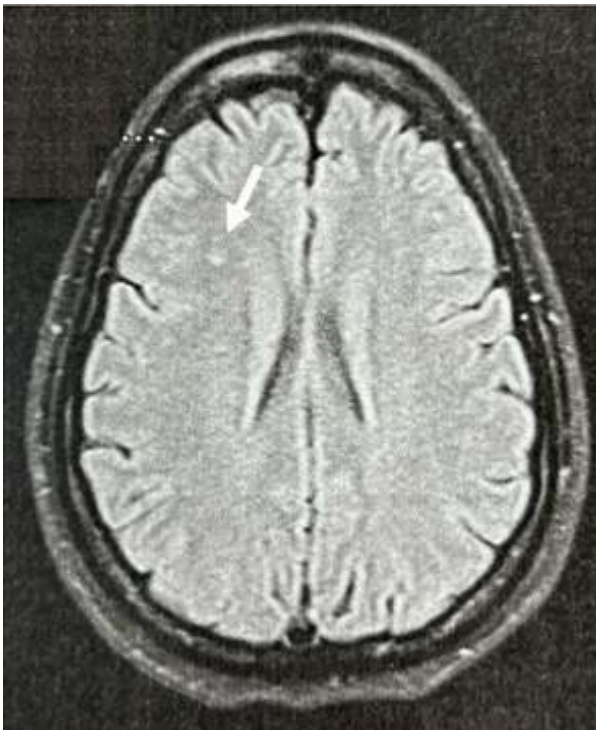


Figure 1. On MRI, a focus of hypersignal on T2 FLAIR was observed in the right frontal white matter (white arrow), suggestive of gliosis due to microvascular alteration.

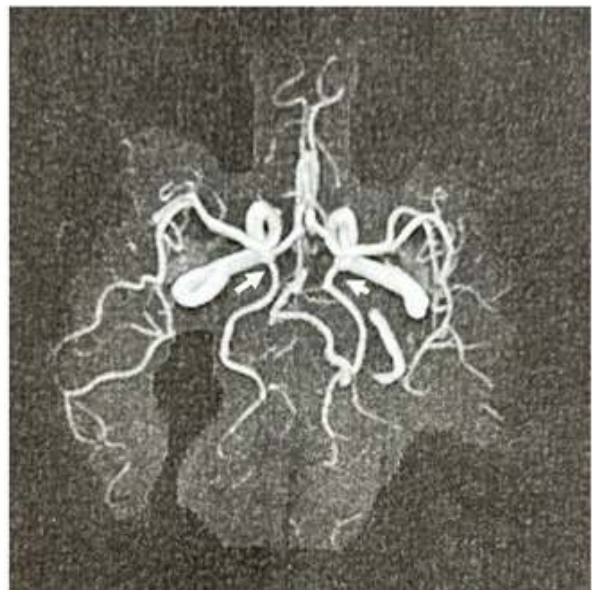


Figure 2. The MRI angiography shows an anatomic variation of the polygon of Willis, with a fetal pattern of both posterior cerebral arteries, which originated from internal carotid carotids (white arrows).

Comments

A stabbing headache is a frequent type of headache



that is negligibly appreciated, perhaps because it has a sudden onset and short persistence (a few seconds) and a rare frequency, with intervals between attacks of months or years.^{2,4,16} The vast majority of individuals with stabbing headache are idiopathic.³ The attacks often occur on different regions of the head in the same individual but can occur fixed in the same area.^{3,17,18} We recently described a series of patients with stabbing headache secondary to intracranial lesions, such as tumors and aneurysms.⁹ Interestingly, these lesions touched the dura mater, suggesting the cause was an irritation of the neural structures innervating the dura mater.⁹ In secondary cases of stabbing headache, some patients reported characteristics that seem to be linked to the association of this type of headache with intracranial lesions.⁹ These characteristics are: a crescent pattern, triggered by head movement, precipitated by Valsalva's maneuvers, and always being in the same point of the head.

Despite the patient presenting some characteristics of a secondary stabbing headache, the imaging investigation did not show alteration in the brain or the dura mater that would suggest a reaction. Only a non-specific alteration in the cerebral white matter, common in patients with migraine, was observed. We do not think that the change observed on MRI is related to the occurrence of stabbing headache.

The reason for ordering an EEG was to rule out the possibility of an ictal headache, possible in mesial temporal lobe epilepsy. These epileptic seizures can start as a severe headache on the same side of the hippocampal sclerosis; they are abrupt in onset, lasting a few seconds.

Apparently, people with migraine would more often have a stabbing headache.⁴ This woman that we present now said that she did not suffer from any other type of headache, including migraine. As we know, women with migraine more frequently have migraine attacks during their menstrual period, some exclusively during this period.^{19,23}

Differential diagnosis is important, as drug treatment can be specific. Some primary headache disorders are more prevalent in women than men, such as migraine, tension-type headache, paroxysmal hemicrania, hemicrania continua, SUNCT, and hypnic headache. Many of these headaches have hormonal influence with increasing intensity during pregnancy, lactation, breastfeeding and menstruation.²⁴

Menstruation is a common trigger for women with

migraine and tension-type headache^{25,26} and appears to be unrelated to other primary headache disorders. It is believed that headache is due to the action of sex hormones, mainly estrogen. This hormone modulates the hypothalamus, pituitary, ovary and endometrium, in addition to acting on serotonergic and central opioid neurons, regulating neuronal activity and receptor density.²⁷

Primary stabbing headache is considered an indomethacin-responsive headache, due to good response to therapeutic doses of indomethacin in up to 60% of patients.²⁸ The dose ranges from 75 to 250 mg/day in two doses. Its mechanism of action is anti-inflammatory through reversible inhibition of cyclooxygenase (COX)-1 and -2, but it can inhibit nitric oxide release and decrease cerebral blood flow and cerebrospinal fluid pressure.²⁹ In case of contraindication to indomethacin or inadequate response, other drugs are used, such as melatonin, onabotulinumtoxin A, gabapentin and topiramate.²

Conclusions

We conclude that this menstrual pattern of stabbing headache attacks is unusual in patients with primary stabbing headache and that it does not fulfil diagnostic criteria for migraine or tension-type headache.

Marcelo Moraes Valença

<https://orcid.org/0000-0003-0678-3782>

Raimundo Pereira Silva-Néto

<https://orcid.org/0000.0002-2343-9679>

Contribution authors: All authors had the same contribution.

Funding: No

Conflict of interests: The authors report no conflict of interest

The patient authorized the publication of her clinical case with MRI results.

Ethical declaration: The patient authorized the publication of her clinical case with MRI results.

References

1. Saygi S. **The Prevalence and Clinical Characteristics of Primary Stabbing Headache.** *J Child Neurol* 2022;37(12-14):916-921 Doi: 10.1177/08830738221048618
2. Murray D and Dilli E. **Primary Stabbing Headache.** *Curr Neurol Neurosci Rep* 2019;19(7):47 Doi: 10.1007/s11910-019-0955-6
3. Guerrero AL, Herrero S, Penas ML, Cortijo E, Rojo E, Mulero P and Fernandez R. **Incidence and influence on**



- referral of primary stabbing headache in an outpatient headache clinic.** *J Headache Pain* 2011;12(3):311-313 Doi: 10.1007/s10194-010-0283-3
4. Pareja JA and Sjaastad O. **Primary stabbing headache.** *Handb Clin Neurol* 2010;97(453-457) Doi: 10.1016/S0072-9752(10)97039-5
 5. Pareja JA, Ruiz J, de Isla C, al-Sabbah H and Espejo J. **Idiopathic stabbing headache (jabs and jolts syndrome).** *Cephalalgia* 1996;16(2):93-96 Doi: 10.1046/j.1468-2982.1996.1602093.x
 6. Sjaastad O, Pettersen H and Bakketeig LS. **The Vaga study; epidemiology of headache I: the prevalence of ultrashort paroxysms.** *Cephalalgia* 2001;21(3):207-215 Doi: 10.1046/j.1468-2982.2001.00189.x
 7. Kim DY, Lee MJ, Choi HA, Choi H and Chung CS. **Clinical patterns of primary stabbing headache: a single clinic-based prospective study.** *J Headache Pain* 2017;18(1):44 Doi: 10.1186/s10194-017-0749-7
 8. Hagler S, Ballaban-Gil K and Robbins MS. **Primary stabbing headache in adults and pediatrics: a review.** *Curr Pain Headache Rep* 2014;18(10):450 Doi: 10.1007/s11916-014-0450-3
 9. Valença MM, de Azevedo Filho HRC, de Souza Ferreira MR, Valença MA, Krymchantowski AV, Valença MF and Andrade-Valença LPA. **Secondary stabbing headache associated with intracranial tumors, aneurysms, and arteriovenous malformation: An alarming warning sign.** *Headache* 2021;61(1):80-89 Doi: 10.1111/head.14045
 10. Akhlaq H, Li M and Nava VE. **Secondary Stabbing Headache Associated with COVID-19: a Case Report.** *SN Compr Clin Med* 2022;4(1):111 Doi: 10.1007/s42399-022-01194-1
 11. Robbins MS and Evans RW. **Primary and secondary stabbing headache.** *Headache* 2015;55(4):565-570 Doi: 10.1111/head.12554
 12. Klein M, Woehrl B, Zeller G and Straube A. **Stabbing headache as a sign of relapses in multiple sclerosis.** *Headache* 2013;53(7):1159-1161 Doi: 10.1111/head.12138
 13. Robbins MS. **Transient stabbing headache from an acute thalamic hemorrhage.** *J Headache Pain* 2011;12(3):373-375 Doi: 10.1007/s10194-011-0303-y
 14. Marin LF, Felicio AC, Santos WA, Silva PC, Gorinchteyn JC and Marinho IS. **Stabbing headache as the initial manifestation of herpetic meningoencephalitis.** *J Headache Pain* 2010;11(5):445-446 Doi: 10.1007/s10194-010-0220-5
 15. Mascellino AM, Lay CL and Newman LC. **Stabbing headache as the presenting manifestation of intracranial meningioma: a report of two patients.** *Headache* 2001;41(6):599-601 Doi: 10.1046/j.1526-4610.2001.041006599.x
 16. Ahmed M, Canlas J, Mahenthiran M and Al-Ani S. **Primary stabbing headache in children and adolescents.** *Dev Med Child Neurol* 2020;62(1):69-74 Doi: 10.1111/dmcn.14357
 17. Cabral G, Saraiva M, Serodio M, Serrazina F, Salavisa M, Fernandes M, . . . Baptista MV. **Clinical pattern and response to treatment of primary stabbing headache: Retrospective case series study from a Portuguese tertiary hospital.** *Headache* 2022;62(8):1053-1058 Doi: 10.1111/head.14377
 18. Fuh JL, Kuo KH and Wang SJ. **Primary stabbing headache in a headache clinic.** *Cephalalgia* 2007;27(9):1005-1009 Doi: 10.1111/j.1468-2982.2007.01365.x
 19. Cupini LM, Corbelli I and Sarchelli P. **Menstrual migraine: what it is and does it matter?** *J Neurol* 2021;268(7):2355-2363 Doi: 10.1007/s00415-020-09726-2
 20. Fernandez-Martinez E, Onieva-Zafra M, Abreu-Sanchez A, Gonzalez-Sanz JD, Iglesias-Lopez MT, Fernandez-Munoz JJ and Parra-Fernandez M. **Menstrual Migraine Among Spanish University Students.** *J Pediatr Nurs* 2021;56:e1-e6 Doi: 10.1016/j.pedn.2020.06.013
 21. Vetvik KG and MacGregor EA. **Menstrual migraine: a distinct disorder needing greater recognition.** *Lancet Neurol* 2021;20(4):304-315 Doi: 10.1016/S1474-4422(20)30482-8
 22. Wang M, Zhu G, Song Z and Kong F. **Clinical differences between menstrual migraine and nonmenstrual migraine: a systematic review and meta-analysis of observational studies.** *J Neurol* 2022;Doi: 10.1007/s00415-022-11477-1
 23. Verhagen IE, Spaink HA, van der Arend BW, van Casteren DS, MaassenVanDenBrink A and Terwindt GM. **Validation of diagnostic ICHD-3 criteria for menstrual migraine.** *Cephalalgia* 2022;42(11-12):1184-1193 Doi: 10.1177/03331024221099031
 24. Domitrz I. **Headaches in women.** *Ginekol Pol* 2006;77(10):811-819
 25. Campelo AGD, Lima DA, Britto GRC, Moraes ISL, Almeida RM and Silva-Neto RP. **Does menstruation-related headache occur exclusively in women with migraine?** *Acta Neurol Belg* 2021;121(4):1035-1038 Doi: 10.1007/s13760-021-01646-w
 26. Tai MS, Yet SXE, Lim TC, Pow ZY and Goh CB. **Geographical Differences in Trigger Factors of Tension-Type Headaches and Migraines.** *Curr Pain Headache Rep* 2019;23(2):12 Doi: 10.1007/s11916-019-0760-6
 27. Silberstein SD and Merriam GR. **Sex hormones and**



- headache.** *J Pain Symptom Manage* 1993;8(2):98-114 Doi: 10.1016/0885-3924(93)90107-7
28. Chua AL and Nahas S. **Ice Pick Headache.** *Curr Pain Headache Rep* 2016;20(5):30 Doi: 10.1007/s11916-016-0559-7
29. Ferrante E, Tassorelli C, Rossi P, Lisotto C and Nappi G. **Focus on the management of thunderclap headache: from nosography to treatment.** *J Headache Pain* 2011;12(2):251-258 Doi: 10.1007/s10194-011-0302-z