



Headache and neuroimaging findings in conditions of cerebrospinal fluid (CSF) circulation disorders: in hydrocephalus, *pseudotumor cerebri*, and CSF hypotension syndrome

Maria de Fátima Viana Vasco Aragão^{1,2} , Luziany Carvalho Araújo³ , Marcelo Moraes Valença¹ 

¹Universidade Federal de Pernambuco, Recife, Brazil

²Centro Diagnóstico Multimagem, Recife, Brazil

³Hospital da Restauração, Recife, Brazil.



Maria de Fátima Viana Vasco Aragão
fatima.vascoaragao@gmail.com

Edited by:

Juliana Ramos de Andrade

Keywords:

Post-Dural Puncture Headache
Intracranial Hypotension
Neuroimaging
Pseudotumor Cerebri
Headache

Abstract

The authors wish in this narrative minireview show and comment on some neuroimaging findings encountered in patients with conditions of cerebrospinal fluid (CSF) circulation disorders, such as in the hydrocephalus, pseudotumor cerebri, and CSF hypotension syndrome. The MRI of a young woman with a clinical diagnosis of post-dural puncture headache, performed on the fourth postpartum day after cesarean delivery, evolving with headache and diplopia, is shown. Non-contrast-enhanced sagittal T1 magnetic resonance imaging shows that the cerebellar tonsils are at the level of the foramen magnum, therefore still within normal limits, but, despite that, the opening of the cerebral aqueduct in the third ventricle is below the imaginary line connecting the anterior clinoid to the vein of Galen, therefore considered abnormally lower than the expected anatomical position. The axial T1-weighted images with post-contrast fat suppression also show impregnation and thickening of the dura mater. There is also mild engorgement of the cerebral venous sinuses, best demonstrated on T1 with post-contrast fat suppression, which is also identified on post-contrast magnetic resonance angiography, with no signs of venous thrombosis. We conclude that the diagnosis of a patient with intracranial hypotension syndrome can be suspected or confirmed with typical neuroimaging findings.

Received: December 2, 2021
Accepted: December 15, 2021



Introduction

In the intracranial cavity we find three distinct compartments: the brain parenchyma ($\cong 1,300$ ml), blood ($\cong 120$ ml), and cerebrospinal fluid (CSF, $\cong 120$ ml) in normal physiological conditions. According to the Monro-Kellie doctrine, the sum of the volumes of these three compartments is constant.¹⁻⁵ The production of CSF is about 0.35 ml/min ($\cong 500$ ml/day), and there is dynamic blood in and outflow (approximately 700 ml/min) regarding the intracranial space.⁶ The only real constant is the brain parenchyma volume, which is inelastic. Recent studies have observed changes in these compartments in abnormal situations.⁶⁻¹⁰

During the cardiac cycle (systole-diastole), the volume of the other two compartments varies, with an inverse relationship between intracranial blood volumes and intracranial CSF volume. A certain amount of CSF has to exit at each systole via the foramen magnum to the dural sac to allow arterial blood to enter the cranial cavity; without it, there would be no space for more blood inside the cranial cavity.

The authors wish in this narrative minireview show and comment on some neuroimaging findings encountered in patients with conditions of circulation disorders, such as in the hydrocephalus, *pseudotumor cerebri*, and CSF hypotension syndrome.

Hydrocephalus

Patients with hydrocephalus often complain of headache. The headache pattern will depend on several variables, such as intracranial hypertension or hypotension, type of hydrocephalus, associated conditions (e.g., tumor, infection, trauma), age, the position of the head in relation to the body, among other factors.¹¹⁻¹⁴

Hydrocephalus can be defined as CSF accumulation within the ventricular cavities. It can have several causes such as inflammation, neoplasms, congenital malformations, and consequent obstruction of CSF outflow pathways in the ventricles or subarachnoid space, leading, in most cases, to increased intracranial pressure.

This increased intracranial pressure causes headache, vomiting, lowered consciousness, seizures, coma, and even death if left untreated. Differential diagnosis of the cause of the pain can be difficult in patients with hydrocephalus. However, patients with hydrocephalus treated either by a shunt (ventriculoperitoneal shunt) or third ventriculostomy may have headache of another etiology. The possibility

of shunt dysfunction has to be considered, but migraine may be present in a patient with hydrocephalus, especially if there is a strong family history of migraine.

An intriguing form of hydrocephalus when the patient has a headache is the hydrocephalus associated with a colloid cyst of the third ventricle.¹⁵ Although the association is rare, one of the authors (MMV) saw a few patients with headache complain who went to his office. The neuroimage investigation displayed a colloid cyst of the third ventricle without hydrocephalus or associated with a unilateral dilatation of the lateral ventricle, and the fundus examination was normal. Is the colloid cyst of the third ventricle an incidentaloma in these patients, and is the headache of the primary type (e.g., migraine)?

Classically, third ventricle colloid cyst headache is associated with the development of acute hydrocephalus caused by a change in head position. In these cases, neurosurgeons interpret the absence of hydrocephalus in the image as a regression of hydrocephalus because the cyst has moved, clearing the Monro's orifice. They almost always indicate an emergency surgery for fear of having intermittent hydrocephalus.

One of the authors (MMV) recently became aware of a case of a woman who had continuous pain in the right frontal region, and neuroimaging showed the presence of a colloid cyst in the third ventricle. This patient was immediately operated on for the cyst. Days later, vesicles appeared in the territory of the trigeminal branch. The pain was due to ophthalmic herpes zoster.

Pseudotumor Cerebri

Idiopathic intracranial hypertension, also known as *pseudotumor cerebri*, is an idiopathic syndrome in which increased intracranial pressure is observed without hydrocephalus or associated expansive lesion. It most often affects middle-aged obese women.¹⁶⁻¹⁸ Other associations have been described with the syndrome, such as some use of specific drugs, endocrinopathies, and nutritional disturbances.¹⁸ The classic clinical presentation is headache associated with visual loss, photophobia, and tinnitus.¹⁹⁻²²

Some conditions associated with the development of idiopathic intracranial hypertension, such as vitamin A intake²³⁻²⁵, are described.²⁶



The most frequent radiological findings are ectasia and tortuosity of the cerebrospinal fluid sheaths of the optic nerves, papilledema, cerebrospinal fluid insinuation into the sellar cavity with compression of the pituitary parenchyma (partially empty *sella*), enlargement of Meckel's cavities, and stenosis of the lateral portions of the transverse sinuses.²⁷⁻³⁴

Cerebrospinal Fluid Hypotension

Cerebrospinal fluid hypotension is characterized by orthostatic headache associated with low CSF pressure, usually resulting from CSF leakage due to lumbar punctures, trauma, great physical exertion, severe dehydration, or spontaneous tear of the dura mater.³⁵ Peak incidence is among people between 30-40 years of age.³⁵

The patient characteristically presents with severe headache (which may be orthostatic, pulsatile, with or without neck

stiffness), abducens nerve palsy, and visual disturbances.³⁵ The headache is self-limiting because the dura mater has self-repairing properties, as observed in experiments with human dura mater from adult cadavers.³⁶ Most cases resolve spontaneously in one week.³⁵

Typical imaging findings are^{2, 37-38}:

- Smooth enhancement of the pachymeninge (dura mater);
- Engorgement of venous structures (dural venous sinuses, cerebral veins, epidural venous plexuses);
- Pituitary swelling;
- Subdural hematomas and effusions;
- Herniation of structures (tonsils);
- Rectification of the anterior surface of the pons;
- Point of communication between the 3rd ventricle and the aqueduct of Sylvius below the line between the anterior clinoid process and the vein of Galen, and
- Reduction of the interpeduncular cistern of the pons.

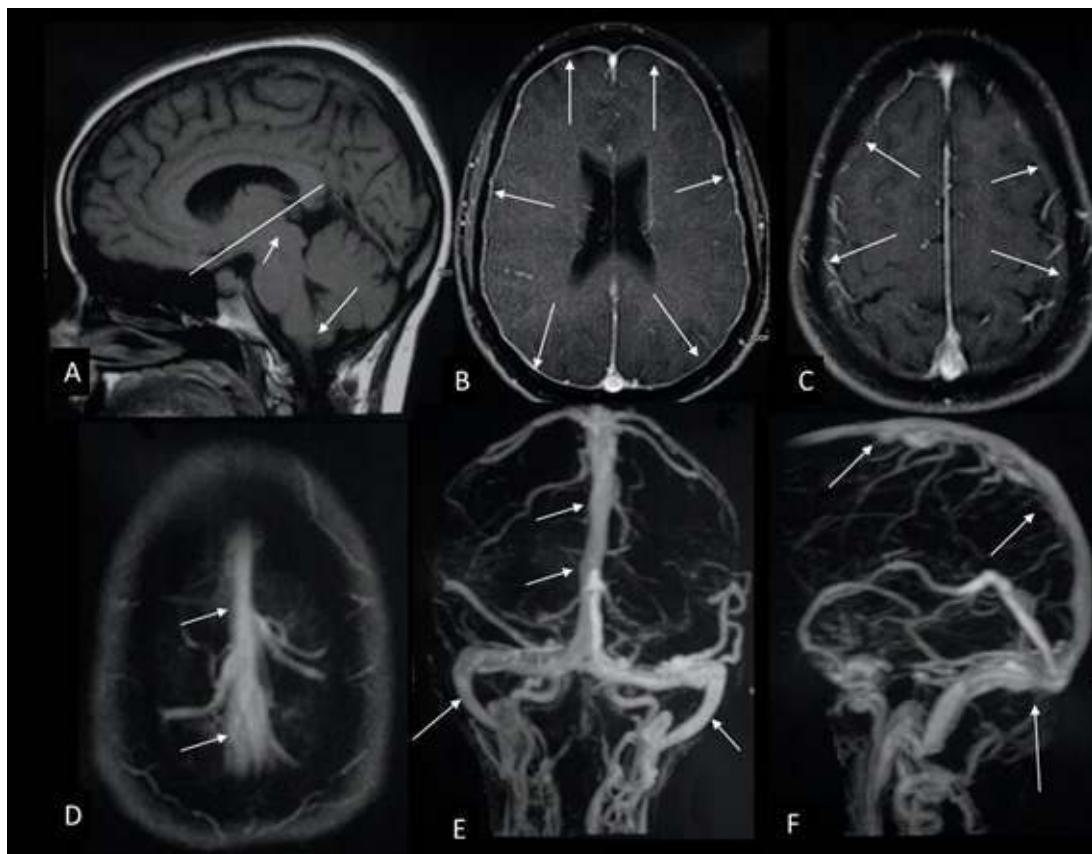


Figure 1. A 29-year-old woman on the fourth postpartum day after cesarean delivery is evolving with headache and diplopia in the right eye. Non-contrast-enhanced sagittal T1 magnetic resonance imaging (A) shows that the cerebellar tonsils are at the level of the foramen magnum (arrows) therefore still within normal limits (there is no previous MRI to compare), but that the opening of the cerebral aqueduct in the third ventricle is below the imaginary line connecting the anterior clinoid to the vein of Galen, therefore lowered (short arrow). The axial T1-weighted images with post-contrast fat suppression (A and B) show impregnation and thickening of the dura mater (arrows). There is also mild engorgement of the cerebral venous sinuses, best demonstrated on T1 with post-contrast fat suppression (arrows, D), which is also identified on post-contrast magnetic resonance angiography (E and F), with no signs of venous thrombosis. This case was courtesy of Dr. Jader Aretakis Cordeiro Filho, Recife, Brazil.



Comment

A neuroimaging investigation of the patient, particularly those individuals with red flags such as postpartum headache³⁹, may reveal the cause of the headache. In the example of postpartum headache, we have to think of several possibilities.⁴⁰⁻⁴² The first is to know whether it is not just another migraine attack in patients who have been migraineur for years, with a pattern of frequent attacks. However, it is known that migraine attacks decrease or even disappear during pregnancy⁴³; they even remain with low frequency during the period that the mother breastfeeds her child.⁴⁴ Obviously, the characteristic of the headache being precipitated when the woman gets out of bed strongly suggests that it is a headache caused by spinal anesthesia, if any. Post-dural puncture headaches are prevalent after spinal anesthesia, mainly when the anesthetist uses needles with a larger gauge. Needles used to remove CSF for diagnosis are also usually of larger gauge; therefore, the frequency of post-dural puncture headaches is higher. Remember that individuals who have already had post-dural puncture headaches have a greater chance of having the same type of headache again.⁴⁵ Also, patients with post-dural puncture headache may develop subdural hematomas⁴⁶, and neuroimaging evaluation may show this type of complication of hypotension.

We also have to think about cerebral venous thrombosis in the postpartum period.⁴⁷

Acknowledgement

We wish to thank Dr. Jader Aretakis Cordeiro Filho for cooperating with the RMI shown in this article.

Contribution authors: MFVVA and LCA, wrote the article and the selection of the figure; MMV, the final edit of the manuscript.

Conflict of interest: There was no conflict of interest.

Maria de Fátima Viana Vasco Aragão
<https://orcid.org/0000-0002-2341-1422>
Luziany Carvalho Araújo
<https://orcid.org/0000-0001-5072-8487>
Marcelo Moraes Valença
<https://orcid.org/0000-0003-0678-3782>

References

1. Stern WE. **Intracranial Fluid Dynamics: The Relationship of Intracranial Pressure to the Monro-Kellie Doctrine and the Reliability of Pressure Assessment.** *J R Coll Surg Edinb* 1963; 9(18-36)
2. Mokri B. **The Monro-Kellie hypothesis: applications in CSF volume depletion.** *Neurology* 2001; 56(12):1746-1748 Doi:10.1212/wnl.56.12.1746
3. Neff S and Subramaniam RP. Monro-Kellie doctrine. *J Neurosurg* 1996; 85(6):1195
4. Greitz D, Wirestam R, Franck A, Nordell B, Thomsen C and Stahlberg F. **Pulsatile brain movement and associated hydrodynamics studied by magnetic resonance phase imaging. The Monro-Kellie doctrine revisited.** *Neuroradiology* 1992; 34(5):370-380 Doi:10.1007/BF00596493
5. Macintyre I. **A hotbed of medical innovation: George Kellie (1770-1829), his colleagues at Leith and the Monro-Kellie doctrine.** *J Med Biogr* 2014; 22(2):93-100 Doi:10.1177/09677720134792710967772013479271 [pii]
6. Wilson MH. **Monro-Kellie 2.0: The dynamic vascular and venous pathophysiological components of intracranial pressure.** *J Cereb Blood Flow Metab* 2016; 36(8):1338-1350 Doi:10.1177/0271678X166487110271678X16648711 [pii]
7. Kalisvaart ACJ, Wilkinson CM, Gu S, Kung TFC, Yager J, Winship IR, . . . Colbourne F. **An update to the Monro-Kellie doctrine to reflect tissue compliance after severe ischemic and hemorrhagic stroke.** *Sci Rep* 2020; 10(1):22013 Doi:10.1038/s41598-020-78880-410.1038/s41598-020-78880-4 [pii]
8. Dobrocky T, Rebsamen M, Rummel C, Hani L, Mordasini P, Raabe A, . . . Beck J. **Monro-Kellie Hypothesis: Increase of Ventricular CSF Volume after Surgical Closure of a Spinal Dural Leak in Patients with Spontaneous Intracranial Hypotension.** *AJNR Am J Neuroradiol* 2020; 41(11):2055-2061 Doi:10.3174/ajnr.A678241/11/2055 [pii]
9. Wu JW, Wang YF, Hseu SS, Chen ST, Chen YL, Wu YT, . . . Wang SJ. **Brain volume changes in spontaneous intracranial hypotension: Revisiting the Monro-Kellie doctrine.** *Cephalalgia* 2021; 41(1):58-68 Doi:10.1177/0333102420950385
10. Mangalore S, Rakshith S and Srinivasa R. **Solving the Riddle of "Idiopathic" in Idiopathic Intracranial Hypertension and Normal Pressure Hydrocephalus: An Imaging Study of the Possible Mechanisms - Monro-Kellie 3.0.** *Asian J Neurosurg* 2019; 14(2):440-452 Doi:10.4103/ajns.AJNS_252_18AJNS-14-440 [pii]
11. Carroll C and Riddle M. **Nonspecific Headache Diagnosed as a Brain Colloid**



- Cyst with Hydrocephalus.** *Clin Pract Cases Emerg Med* 2017; 1(2):84-86 Doi:10.5811/cpcem.2016.12.32939cpcem-01-84 [pii]
12. Yigit M, Seyithanoglu MH, Dundar TT, Sogut O and Yigit E. **A Rare Cause of Headache in the Emergency Department: Intraventricular Epidermoid Cyst Rupture With Hydrocephalus.** *J Clin Med Res* 2016; 8(7):560-561 Doi:10.14740/jocmr2585w
 13. Titlic M, Jukic I, Kolic K, Rogosic V and Josipovic-Jelic Z. **An acute headache and hydrocephalus caused by the dermoid cyst.** *Bratisl Lek Listy* 2008; 109(12):580-581
 14. Fitt GJ. **Headache and hydrocephalus.** *Aust Fam Physician* 1998; 27(3):194-195
 15. Valença MM, Farias HSSd, Almeida LCA, França ClS, Nobre KEL, Valença MA, . . .Valença LPAdA. **Headache as a single clinical manifestation of a colloid cyst in the third ventricle.** *Headache Medicine* 2017; 8(1):25 Doi:10.48208/HeadacheMed.2017.7
 16. Burkett JG and Ailani J. **An Up to Date Review of Pseudotumor Cerebri Syndrome.** *Curr Neurol Neurosci Rep* 2018; 18(6):33 Doi:10.1007/s11910-018-0839-110.1007/s11910-018-0839-1 [pii]
 17. Cazzo E, Gestic MA, Utrini MP, Mendonca Chaim FD, Mendonca Chaim FH, Candido EC, . . .Chaim EA. **Bariatric surgery as a treatment for pseudotumor cerebri: case study and narrative review of the literature.** *Sao Paulo Med J* 2018; 136(2):182-187 Doi:S1516-31802017005007103 [pii]10.1590/1516-3180.2016.0305060117
 18. Parker JR and Parker JC, Jr. **Pseudotumor cerebri: a review.** *Ann Clin Lab Sci* 1993; 23(5):325-328
 19. Mahajnah M, Genizi J, Zahalka H, Andreus R and Zelnik N. **Pseudotumor Cerebri Syndrome: From Childhood to Adulthood Risk Factors and Clinical Presentation.** *J Child Neurol* 2020; 35(5):311-316 Doi:10.1177/0883073819895179
 20. Hamedani AG, Witosky KFR, Cosico M, Rennie R, Xiao R, Sheldon CA, . . .Szperka CL. **Headache Characteristics in Children With Pseudotumor Cerebri Syndrome, Elevated Opening Pressure Without Papilledema, and Normal Opening Pressure: A Retrospective Cohort Study.** *Headache* 2018; 58(9):1339-1346 Doi:10.1111/head.13362
 21. Mallery RM, Friedman DI and Liu GT. **Headache and the pseudotumor cerebri syndrome.** *Curr Pain Headache Rep* 2014; 18(9):446 Doi:10.1007/s11916-014-0446-z
 22. Friedman DI. **Pseudotumor cerebri presenting as headache.** *Expert Rev Neurother* 2008; 8(3):397-407 Doi:10.1586/14737175.8.3.397
 23. Chisholm JT, Abou-Jaoude MM, Hessler AB and Sudhakar P. **Pseudotumor Cerebri Syndrome with Resolution After Discontinuing High Vitamin A Containing Dietary Supplement: Case Report and Review.** *Neuroophthalmology* 2018; 42(3):169-175 Doi:10.1080/01658107.2017.13679311367931 [pii]
 24. Dotan G, Goldstein M, Stolovitch C and Kesler A. **Pediatric Pseudotumor Cerebri Associated With Low Serum Levels of Vitamin A.** *J Child Neurol* 2013; 28(11):1370-1377 Doi:0883073812474344 [pii]10.1177/0883073812474344
 25. Morrice G, Jr., Havener WH and Kapetansky F. **Vitamin A intoxication as a cause of pseudotumor cerebri.** *JAMA* 1960; 173(1802-1805) Doi:10.1001/jama.1960.03020340020005
 26. Selhorst JB, Waybright EA, Jennings S and Corbett JJ. **Liver lover's headache: pseudotumor cerebri and vitamin A intoxication.** *JAMA* 1984; 252(24):3365
 27. Morris PP, Black DF, Port J and Campeau N. **Transverse Sinus Stenosis Is the Most Sensitive MR Imaging Correlate of Idiopathic Intracranial Hypertension.** *AJNR Am J Neuroradiol* 2017; 38(3):471-477 Doi:10.3174/ajnr.A5055ajnr.A5055 [pii]
 28. Akay R, Kamisli O, Kahraman A, Oner S and Tecellioglu M. **Evaluation of aqueductal CSF flow dynamics with phase contrast cine MR imaging in idiopathic intracranial hypertension patients: preliminary results.** *Eur Rev Med Pharmacol Sci* 2015; 19(18):3475-3479 Doi:9534 [pii]
 29. Shofty B, Ben-Sira L, Constantini S, Freedman S and Kesler A. **Optic nerve sheath diameter on MR imaging: establishment of norms and comparison of pediatric patients with idiopathic intracranial hypertension with healthy controls.** *AJNR Am J Neuroradiol* 2012; 33(2):366-369 Doi:10.3174/ajnr.A2779ajnr.A2779 [pii]
 30. Suzuki H, Takanashi J, Kobayashi K, Nagasawa K, Tashima K and Kohno Y. **MR imaging of idiopathic intracranial hypertension.** *AJNR Am J Neuroradiol* 2001; 22(1):196-199
 31. Yuh WT, Zhu M, Taoka T, Quets JP, Maley JE, Muhonen MG, . . .Kardon RH. **MR imaging of pituitary morphology in idiopathic intracranial hypertension.** *J Magn Reson Imaging* 2000; 12(6):808-813 Doi:0.1002/1522-2586(200012)12:6<808::AID-JMRI3>3.0.CO;2-N [pii]10.1002/1522-2586(200012)12:6<808::aid-jmri3>3.0.co;2-n



32. Gideon P, Thomsen C, Gjerris F, Sorensen PS, Stahlberg F and Henriksen O. **Measurement of blood flow in the superior sagittal sinus in healthy volunteers, and in patients with normal pressure hydrocephalus and idiopathic intracranial hypertension with phase-contrast cine MR imaging.** *Acta Radiol* 1996; 37(2):171-176 Doi:10.1177/02841851960371P135
33. George AE. **Idiopathic intracranial hypertension: pathogenesis and the role of MR imaging.** *Radiology* 1989; 170(1 Pt 1):21-22 Doi:10.1148/radiology.170.1.2909099
34. Degnan AJ and Levy LM. **Pseudotumor cerebri: brief review of clinical syndrome and imaging findings.** *AJNR Am J Neuroradiol* 2011; 32(11):1986-1993 Doi:10.3174/ajnr.A2404ajnr.A2404 [pii]
35. Amorim JA, Gomes de Barros MV and Valenca MM. **Post-dural (post-lumbar) puncture headache: risk factors and clinical features.** *Cephalalgia* 2012; 32(12):916-923 Doi:10.1177/03331024124539510333102412453951 [pii]
36. Valenca MM, Amorim JA and Moura TP. **Why don't all individuals who undergo dura mater/arachnoid puncture develop postdural puncture headache?** *Anesth Pain Med* 2012; 1(3):207-209 Doi:10.5812/kowsar.22287523.3616
37. Huang YM and Davidsson L. **Sagging brain development after lumbar puncture agrees with Monro-Kellie hypothesis.** *J Neurol* 2013; 260(3):920-922 Doi:10.1007/s00415-012-6811-0
38. George U, Rathore S, Pandian JD and Singh Y. **Diffuse pachymeningeal enhancement and subdural and subarachnoid space opacification on delayed postcontrast fluid-attenuated inversion recovery imaging in spontaneous intracranial hypotension: visualizing the Monro-Kellie hypothesis.** *AJNR Am J Neuroradiol* 2011; 32(1):E16 Doi:10.3174/ajnr.A2262ajnr.A2262 [pii]
39. Shobeiri E and Torabinejad B. **Brain magnetic resonance imaging findings in postpartum headache.** *Neuroradiol J* 2019; 32(1):4-9 Doi:10.1177/1971400918804193
40. Alves AR, Queijo JC, Goncalves LM and Lima MH. **A differential diagnosis for a postpartum headache.** *J Clin Anesth* 2022; 77(110624 Doi:S0952-8180(21)00467-0 [pii]10.1016/j.jclinane.2021.110624
41. Nikouline A and Carr D. **Postpartum headache: A broader differential.** *Am J Emerg Med* 2021; 39(258 e255-258 e256 Doi:S0735-6757(20)30615-X [pii]10.1016/j.ajem.2020.07.022
42. Di Paolo M, Maiese A, Mangiacasale O, Pesetti B, Pierotti S, Manetti AC, . . .Turillazzi E. **Don't Forget Rare Causes of Postpartum Headache! Cases Report and Literature Review.** *Medicina (Kaunas)* 2021; 57(4):Doi:376 [pii]10.3390/medicina57040376medicina57040376 [pii]
43. Serva WA, Serva VM, de Fatima Costa Caminha M, Figueiroa JN, Albuquerque EC, Serva GB, . . .Valenca MM. **Course of migraine during pregnancy among migraine sufferers before pregnancy.** *Arq Neuropsiquiatr* 2011; 69(4):613-619 Doi:S0004-282X2011000500008 [pii]10.1590/s0004-282x2011000500008
44. Serva WA, Serva VM, Caminha Mde F, Figueiroa JN, Serva GB and Valenca MM. **Exclusive breastfeeding protects against postpartum migraine recurrence attacks?** *Arq Neuropsiquiatr* 2012; 70(6):428-434 Doi:S0004-282X2012000600009 [pii]10.1590/s0004-282x2012000600009
45. Amorim JA and Valenca MM. **Postdural puncture headache is a risk factor for new postdural puncture headache.** *Cephalalgia* 2008; 28(1):5-8 Doi:CHA1454 [pii]10.1111/j.1468-2982.2007.01454.x
46. Amorim JA, Remigio DS, Damazio Filho O, de Barros MA, Carvalho VN and Valenca MM. **Intracranial subdural hematoma post-spinal anesthesia: report of two cases and review of 33 cases in the literature.** *Rev Bras Anesthesiol* 2010; 60(6):620-629, 344-629 Doi:10.1016/S0034-7094(10)70077-5S0034-7094(10)70077-5 [pii]
47. Oh MK, Ryu JH, Jeon WJ, Lee CW and Cho SY. **Case report: postpartum cerebral venous thrombosis misdiagnosed as postdural puncture headache.** *BMC Anesthesiol* 2020; 20(1):80 Doi:10.1186/s12871-020-00992-110.1186/s12871-020-00992-1 [pii]